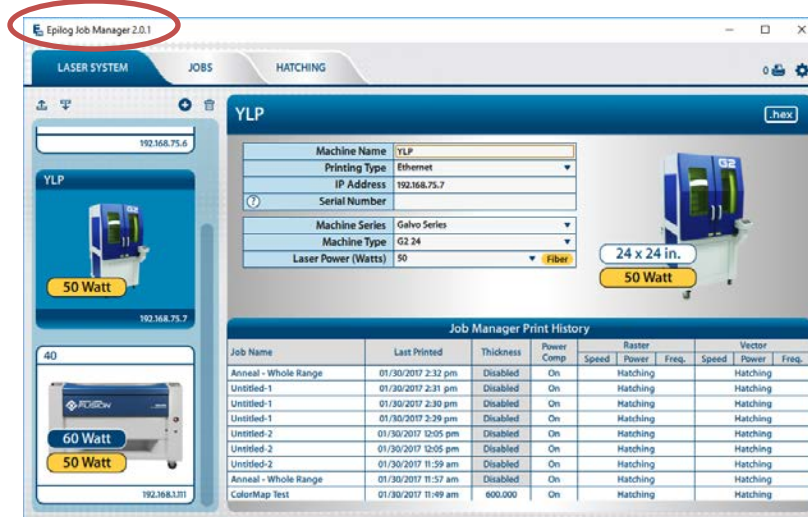
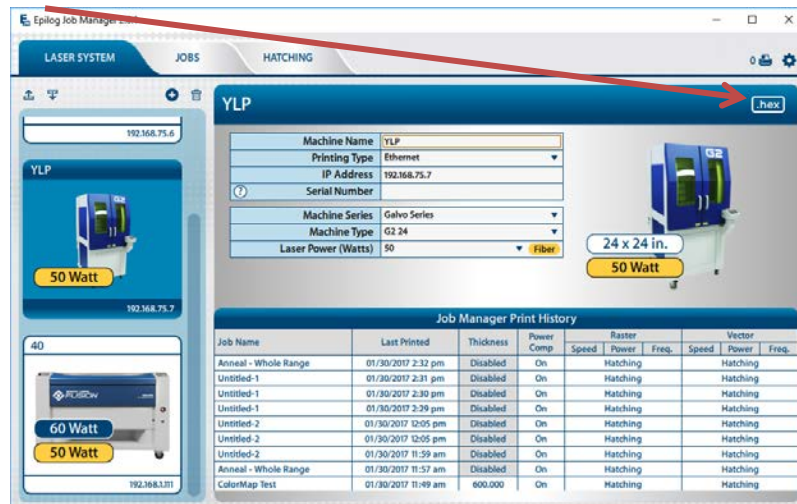


# Galvo G2 - Updating Firmware

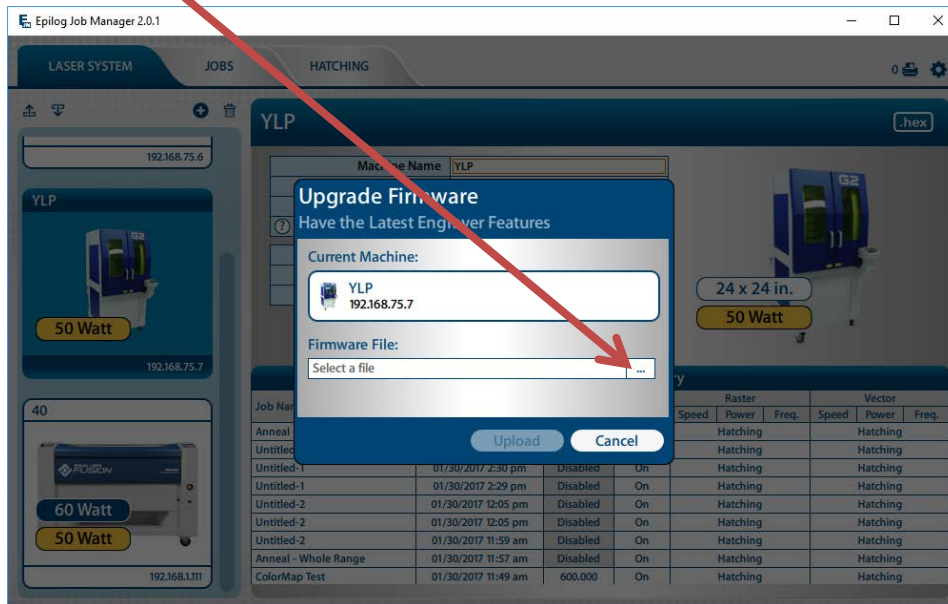
1. Open the Job Manager (Version 2.0.X)
2. Select the machine you want to update from the **Laser System** tab
  - a. Make sure the IP address is correct



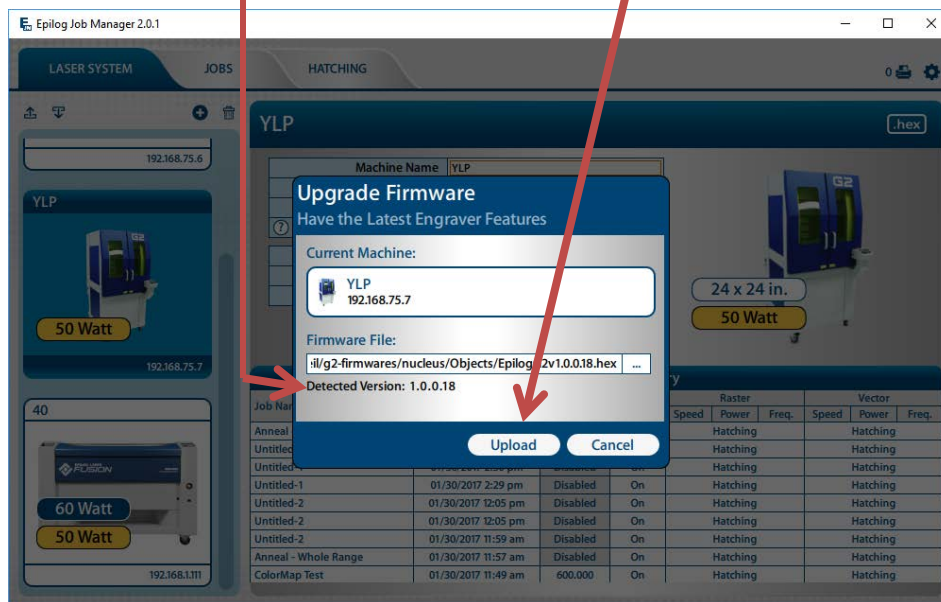
3. Click on the **load hex** icon in the upper right hand corner of the laser system configuration



- Click the **browse icon** and browse for the hex file (EpilogG2Vx.x.x.x.hex)



- Verify that the **Detectected Version** is correct, and click **Upload**



- At the Galvo, click the **Run** button twice when the **firmware** job is selected