

SECTION 3: DRIVER INSTALLATION

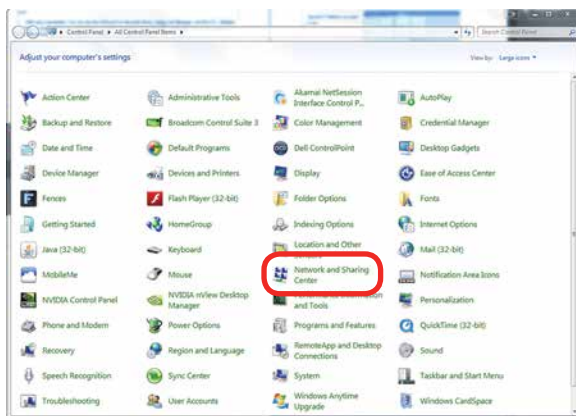
Windows 7: Ethernet Installation

Next we'll be installing the print driver. Choose your operating system. We demonstrate Windows 7, 8, and 10 installations.

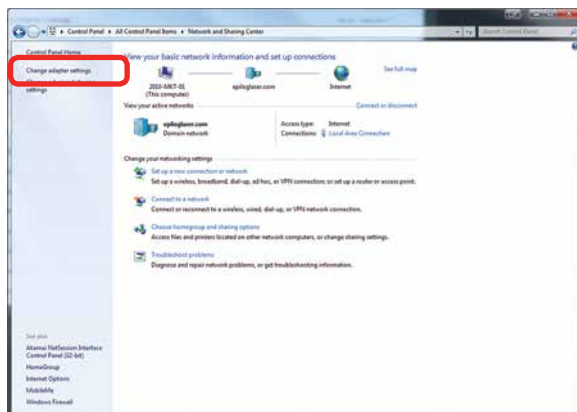
Windows 7: Ethernet Installation

Set Up TCP/IP Address in the Computer

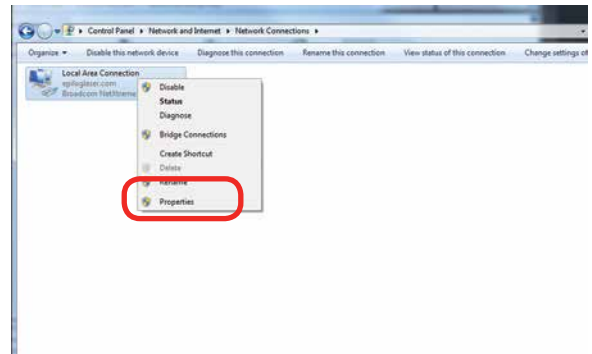
1. Go to your **Network and Sharing Center** in your computer's **Control Panel**.



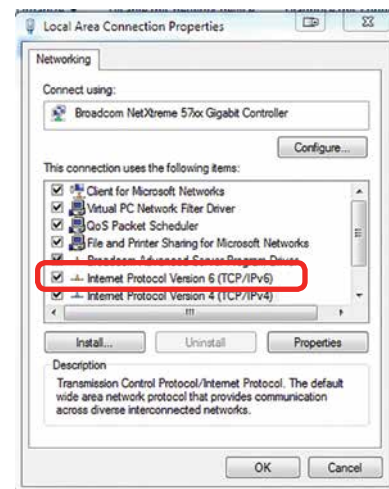
2. Click **Change Adapter Settings**.



3. Right click **Local Area Connection**, then click **Properties**.



4. Select **Internet Protocol Version 4 (TCP/IP)**. Make sure you do not select Version 6.



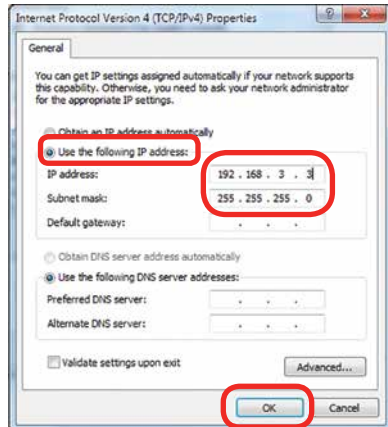
5. Select **Use the following IP Address**. Type in the following IP Address: **192.168.3.3**.



This number is not an error; the last digit of the IP address in **this window must be different than the IP address you set in the laser.**

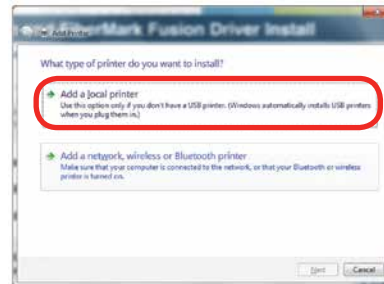
SECTION 3: DRIVER INSTALLATION

6. Type in a Subnet Mask of **255.255.255.0**, then click **OK**.

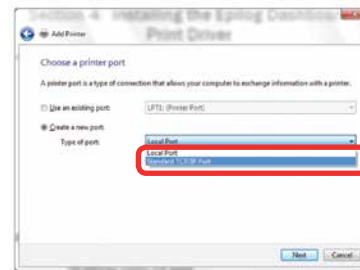


You can also download the latest driver from epiloglaser.com/tech-support/epilog-drivers.htm. Go to **Devices and Printers** on your computer and click **Add a Printer** to start the process.

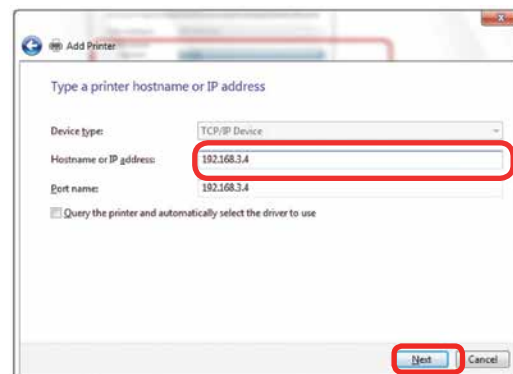
3. Click **Add a local printer**.



4. Click **Create New Port**, then click on the drop-down menu and select **Standard TCP/IP Port**, then click **Next**.



5. Enter the IP Address to match the IP Address you set at the laser in **“Setting the IP Address”** on page 15. Most Epilog users will use the IP Address of 192.168.3.4, which is what we use in this document. After typing in the IP Address, click **Next**. Wait while the computer identifies the port.



Installing the Driver

1. Insert the Driver CD in the computer and select your laser system.

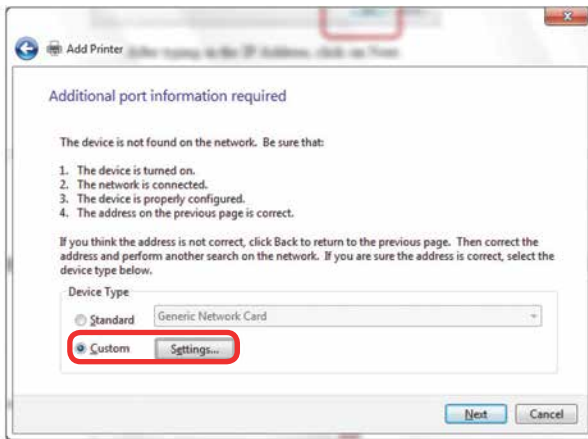


2. Select the Dashboard Driver.

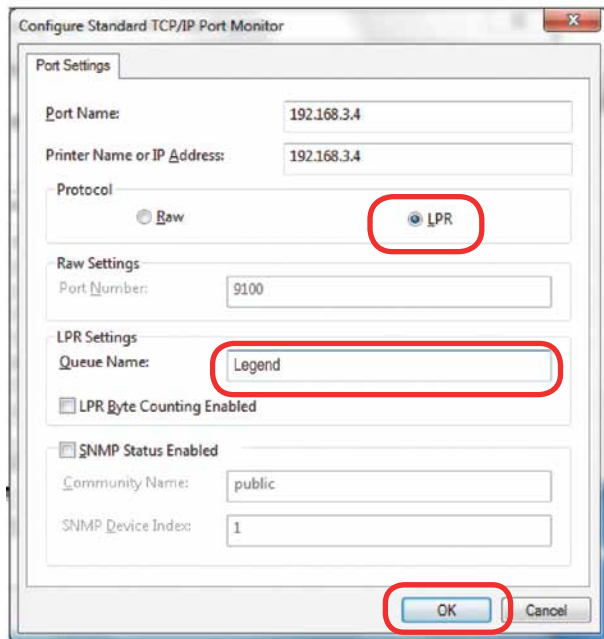


SECTION 3: DRIVER INSTALLATION

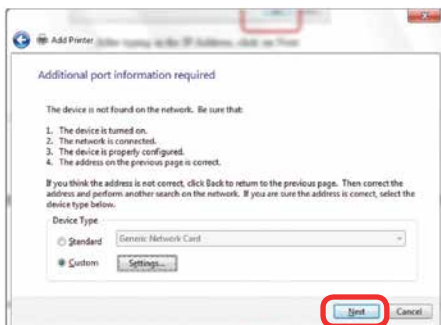
6. Select **Custom** and then **Settings**.



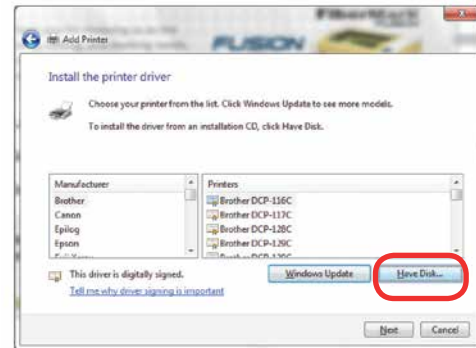
7. **Set Protocol to LPR**. This is a very important step. Your download time will increase significantly if LPR is not selected. Type **Legend** into the Queue Name, then click **OK**.



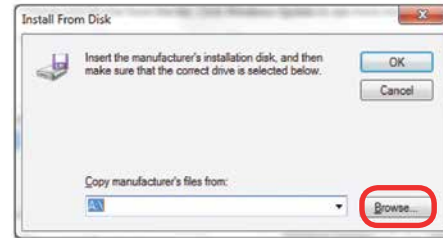
8. Click **Next**.



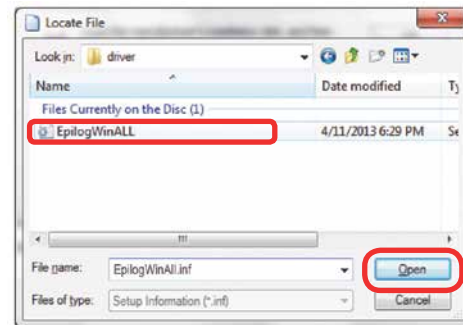
9. Click **Have Disk**.



10. Click **Browse** and go to the folder where you saved the driver and click **Open**. (The default location is c:/fibermark_driver.)



11. Click **EpilogWinALL** file and click **Open**.

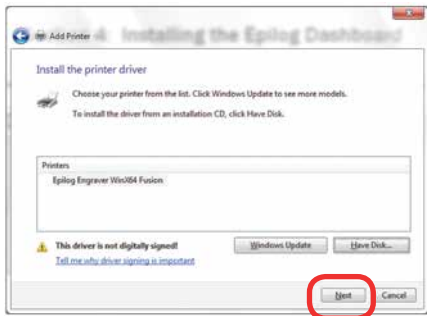


12. Click **OK**.

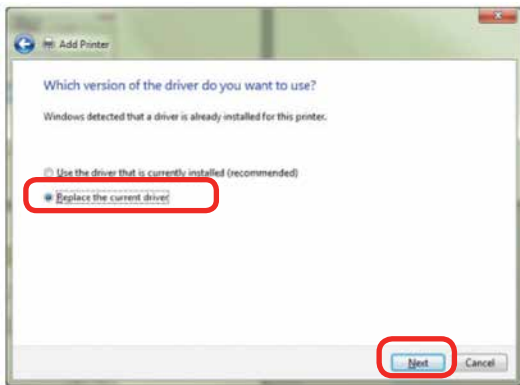


SECTION 3: DRIVER INSTALLATION

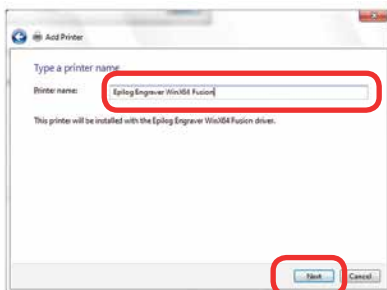
13. Click **Next**.



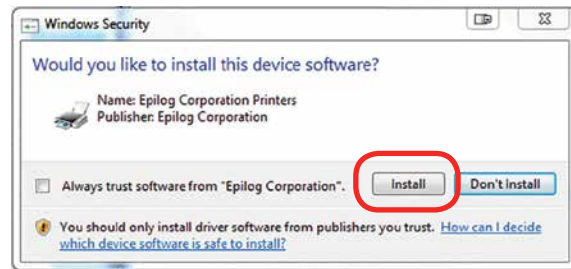
14. Click **Replace the current driver** if requested, then click **Next**.



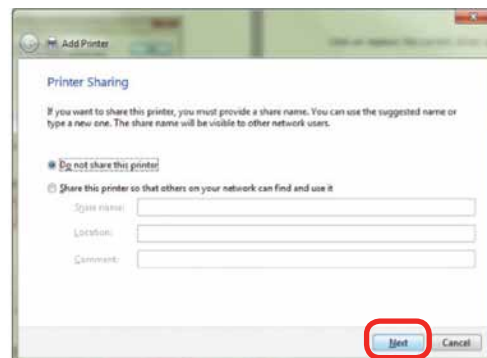
15. You can rename your printer here. We have not changed it for this document, but many users like to associate the driver name with the IP Address they are using, for example Epilog FiberMark 192.168.3.4. This is especially helpful if there is more than one laser connected to a single computer. Click **Next**.



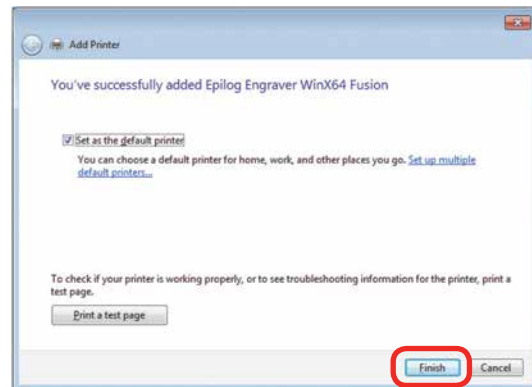
16. If you see this screen, click **Install**.



17. Click **Next**.



18. Click **Finish** and your driver is installed.



19. **You must now restart your computer** before you continue.

SECTION 3: DRIVER INSTALLATION

Windows 7: USB Installation

Please follow these instructions closely! Using a different process to install the Dashboard driver is likely to fail if you are using Windows 7.

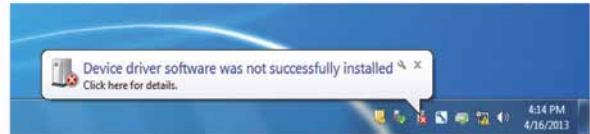
1. Insert the Epilog driver install disc into your computer (or download the files from the website). One of the following screens will appear. For the USB installation, you will want to close them. We do not want the computer to automatically try to install the driver.



2. With the power of your laser turned off, **connect the USB cable** to your computer and your laser.
3. **Power on your laser system.** It will take about a minute for the laser to initialize. After it initializes it will start the process of installing the driver. You will see activity on the USB icon in your system tray (lower right corner of your computer screen).

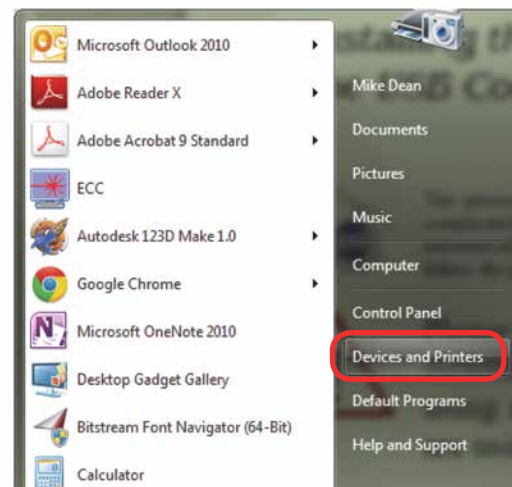


4. A small window will appear in the lower right corner of your computer screen that indicates installation was successful. This is only partially true.
5. After a short wait you will see another small window



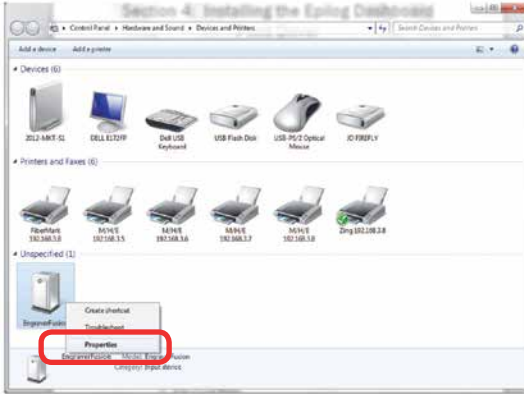
that indicates the installation was not successful. This is what we hope to see and will lead us to the next step in the process. If your computer is connected to the Internet, it will take a few minutes for your computer to display these windows. Please be patient during this process and let the computer finish trying to install the drivers. Interrupting the computer at this point will require you to restart the process.

6. After the failure notification, go to the Windows start button (lower left corner of your computer screen). Click **Devices and Printers**.

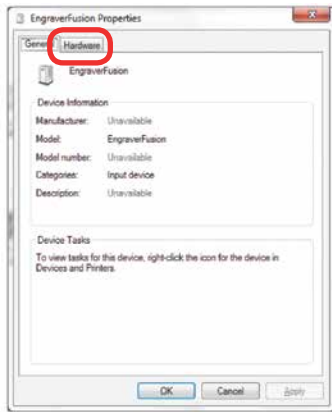


SECTION 3: DRIVER INSTALLATION

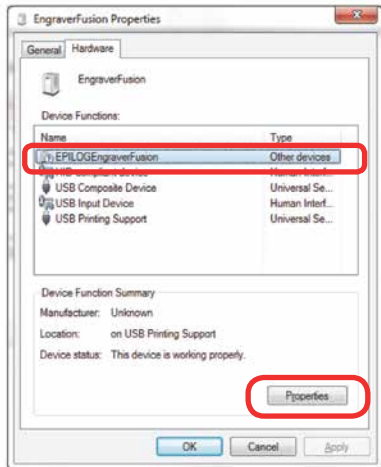
7. Right click on the **FiberMark icon**. Then click **Properties**.



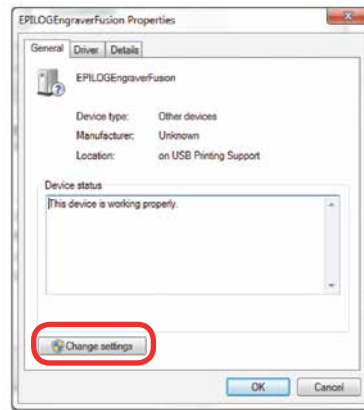
8. Select the **Hardware** tab.



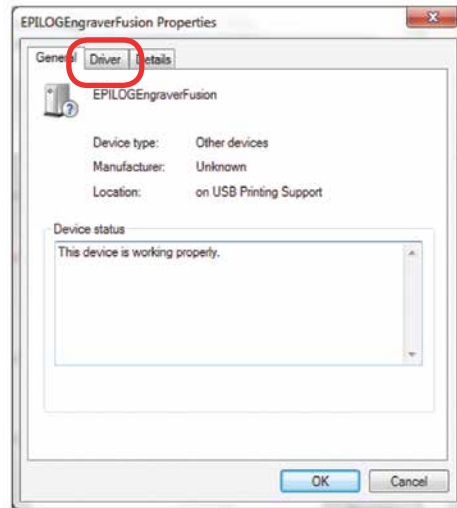
9. Select the device **EpilogEngraver** then click **Properties**.



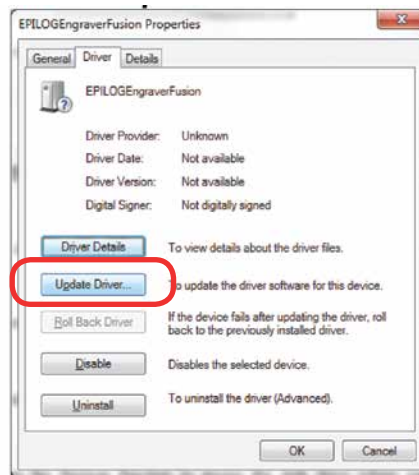
10. Click **Change Settings**.



11. Click the **Driver** tab.

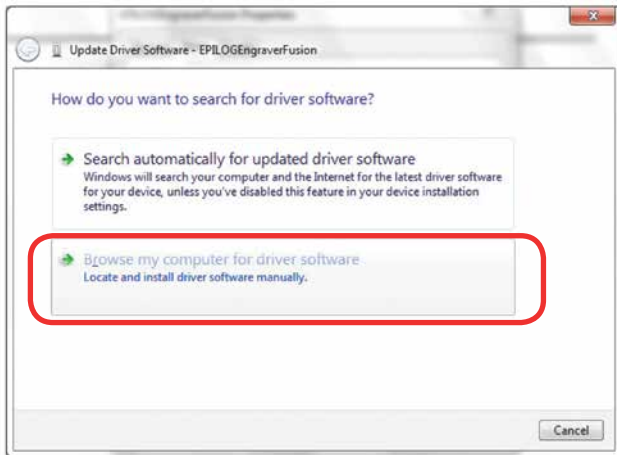


12. Click **Update Driver**.

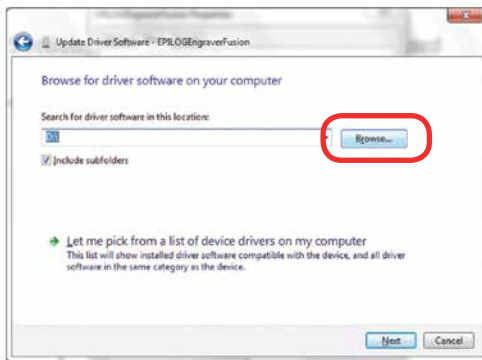


SECTION 3: DRIVER INSTALLATION

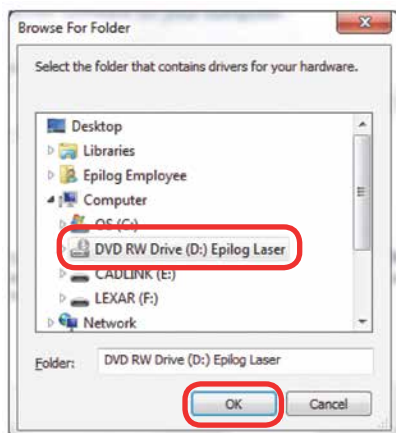
13. Click **Browse my Computer for driver software.**



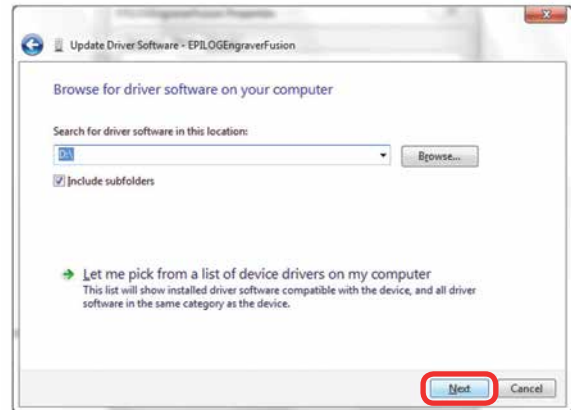
14. Use the **Browse** button to direct your computer to your disc drive that contains the Epilog driver disc that you inserted earlier in this process. (You can also download the latest driver from epiloglaser.com/tech-support/epilog-drivers.htm.)



15. For this document we show the DVD RW drive as the drive where the disc is located.

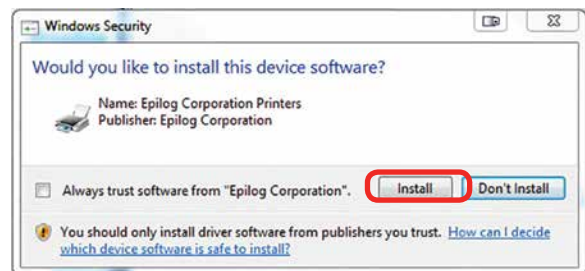


16. Once you have the proper disc drive showing click on the **Next** button.

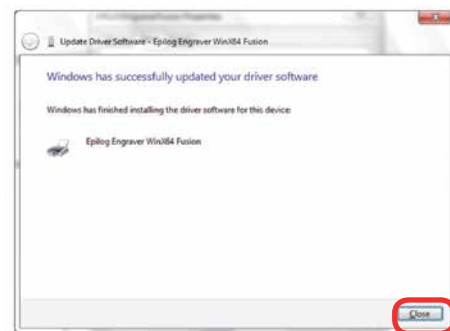


17. The progress window will appear.

18. If you see this screen, click **Install**.



19. Your Epilog Laser Dashboard print driver has been successfully installed on the USB port. Click **Close**.



20. Click **Close** in the next window and then **Close** again. You will then see your laser driver in the Devices and Printers page. Click on the red X in the upper right corner of this page. That's it! You are ready to print to your laser.

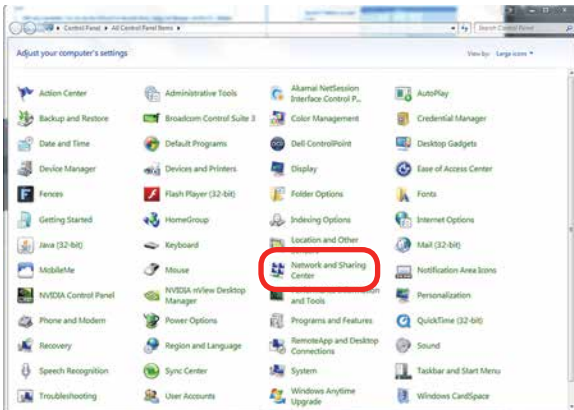
SECTION 3: DRIVER INSTALLATION

Windows 8 and 10: Ethernet Installation

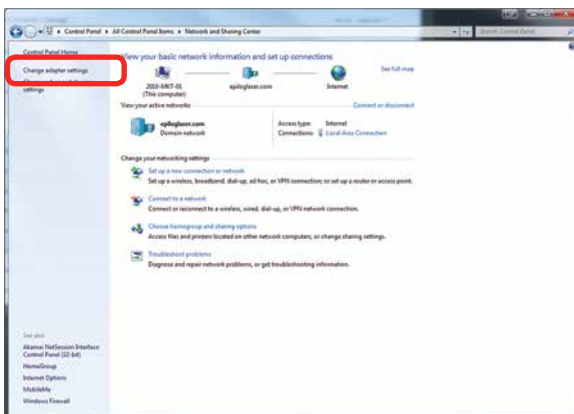
Windows 8 and 10: Ethernet Installation

Set Up TCP/IP Address in the Computer

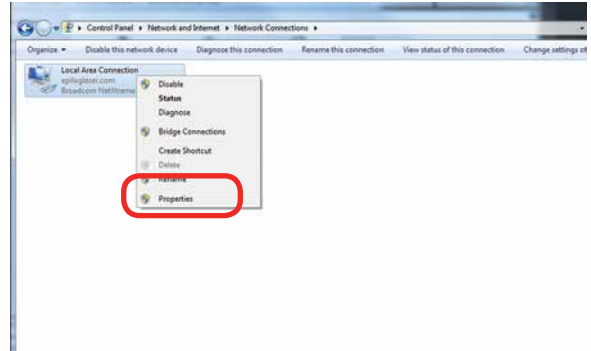
1. Go to your **Network and Sharing Center** in your computer's **Control Panel**.



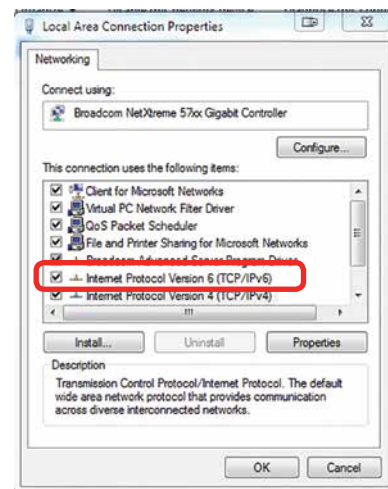
2. Click **Change Adapter Settings**.



3. Right click **Local Area Connection**, then click **Properties**.



4. Select **Internet Protocol Version 4 (TCP/IP)**. Make sure you do not select Version 6.



5. Select **Use the following IP Address**. Type in the following IP Address: **192.168.3.3**.

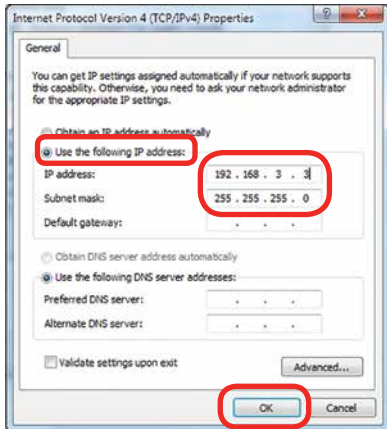


This number is not an error; the last digit of the IP address in **this window must be different than the IP address you set in the laser.**

SECTION 3: DRIVER INSTALLATION

Windows 8 and 10: Ethernet Installation

6. Type in a Subnet Mask of **255.255.255.0**, then click **OK**.

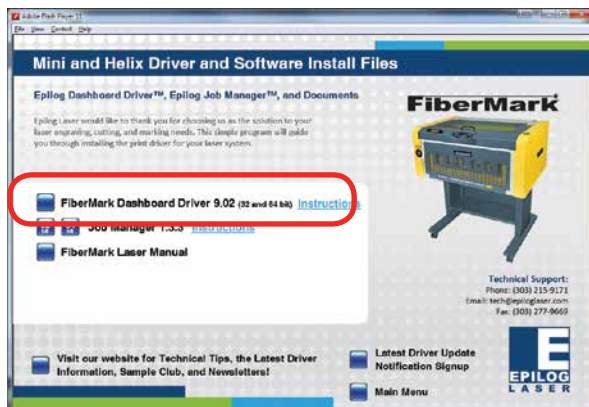


Installing the Driver

1. Insert the Driver CD in the computer and select your laser system.



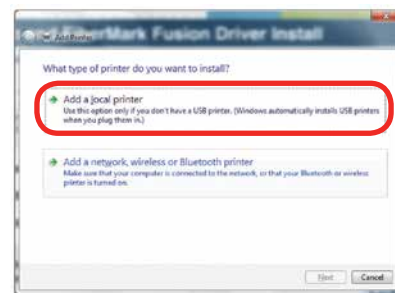
2. Select the Dashboard Driver.



You can also download the latest driver from epiloglaser.com/tech-support/epilog-drivers.htm. Go to **Devices and Printers** on your computer and click **Add a Printer** to start the process.

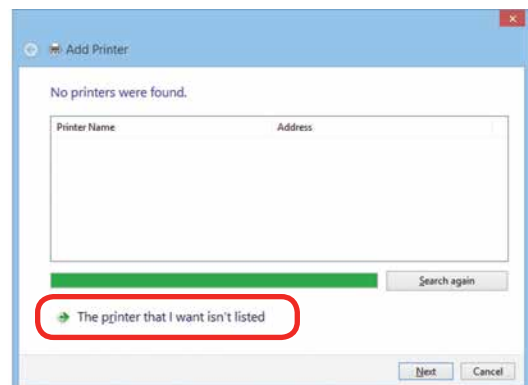
Windows 8 and 8.1/10 have different paths. Choose your operating system:

In Windows 8:

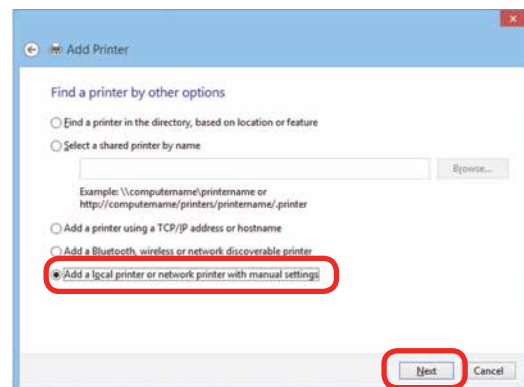


In Windows 8.1/10:

Select **The printer that I want isn't listed**.



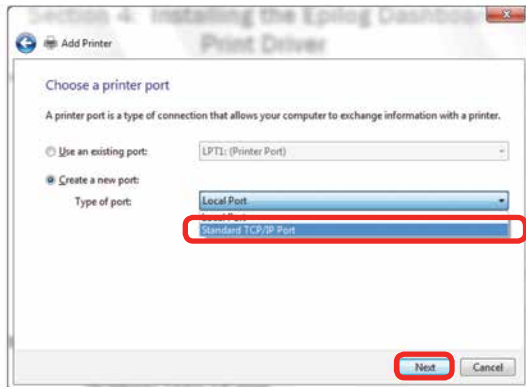
Click **Add a local printer or network printer with manual settings**. Click **Next**.



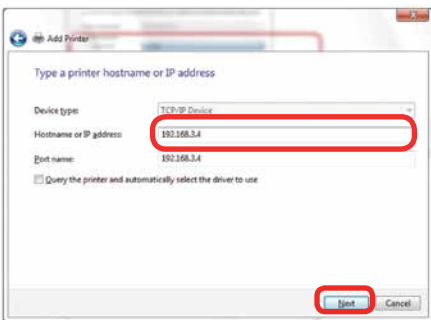
SECTION 3: DRIVER INSTALLATION

Windows 8 and 10: Ethernet Installation

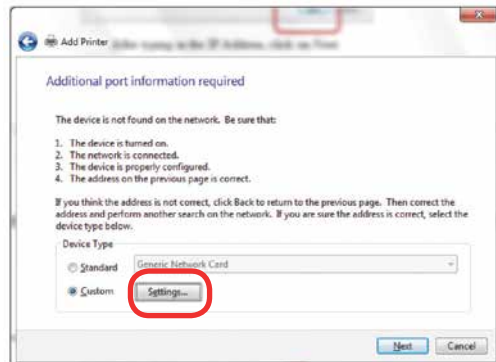
3. Select **Create a new port**, then **Standard TCP/IP Port**. Click **Next**.



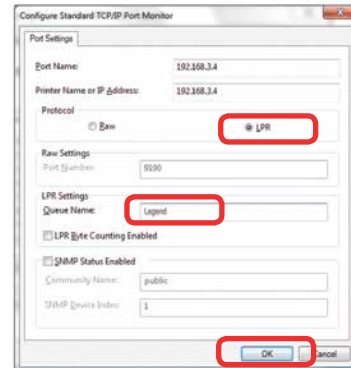
4. Enter the IP Address to match the IP Address you set at the laser in **“Setting the IP Address” on page 15**. Most Epilog users will use the IP Address of 192.168.3.4, which is what we use in this document. After typing in the IP Address, click **Next**. Wait while the computer identifies the port.



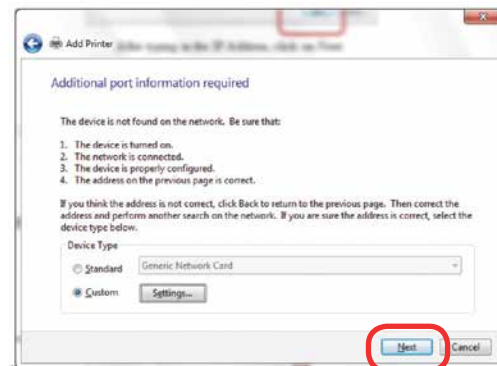
5. Select **Custom**, then **Settings**.



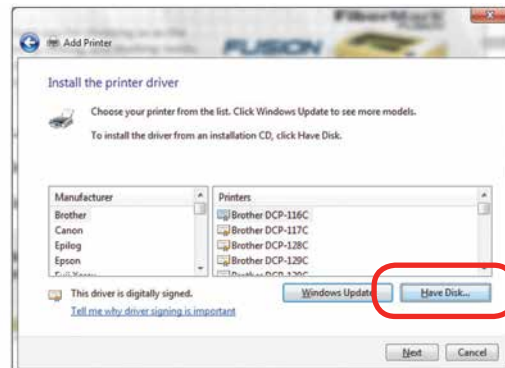
6. **Set Protocol to LPR**. This is a very important step. Your download time will be greatly increased if LPR is not selected. Type **Legend** into the Queue Name and click **OK**.



7. Click **Next**.



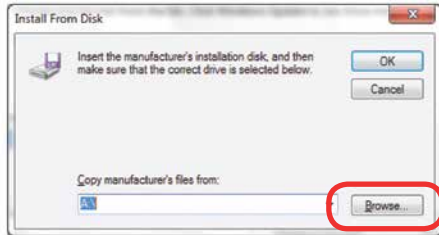
8. Click **Have Disk**.



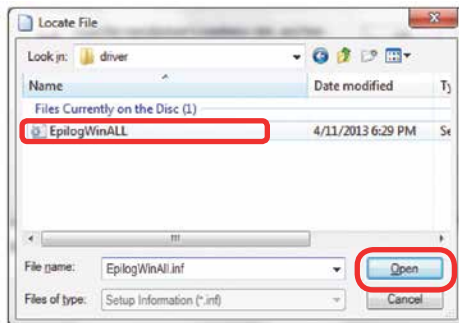
SECTION 3: DRIVER INSTALLATION

Windows 8 and 10: Ethernet Installation

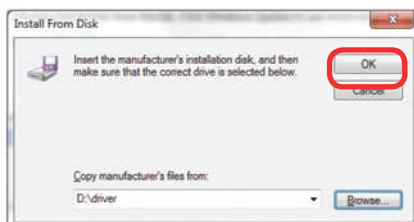
9. Click **Browse**, browse to the folder where you saved the download. The default location is c:/fibermark_ driver.



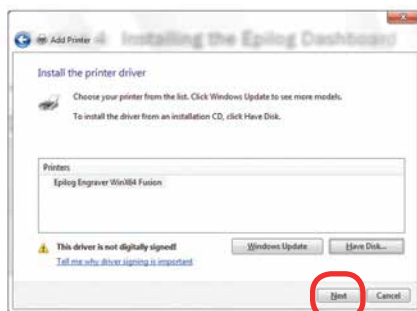
10. Click **EpilogWinALL** file and click **Open**.



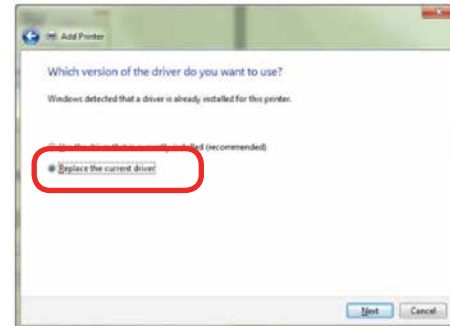
11. Click **OK**.



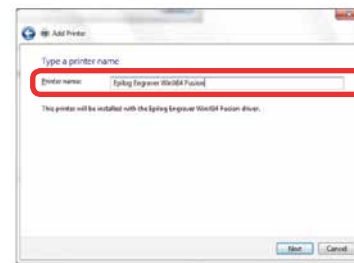
12. Click **Next**.



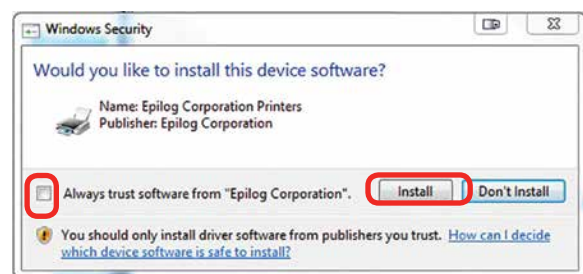
13. Click **Replace the current driver** if requested and click **Next**.



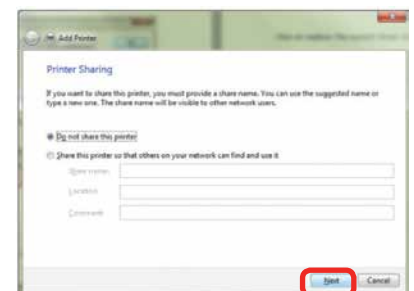
14. You can rename your printer here. We have not changed it for this document, but many users like to associate the driver name with the IP Address they are using, especially if there is more than one laser connected to a single computer. For example, we might rename the driver **FiberMark 192.168.3.4**. Click **Next**.



15. If you see this page, click **Always trust software from "Epilog Corporation"** then **Install**.



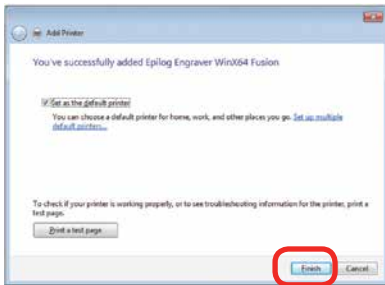
16. Click **Next**.



SECTION 3: DRIVER INSTALLATION

Windows 8 and 10: USB Installation

- Click **Finish** and your driver is installed.

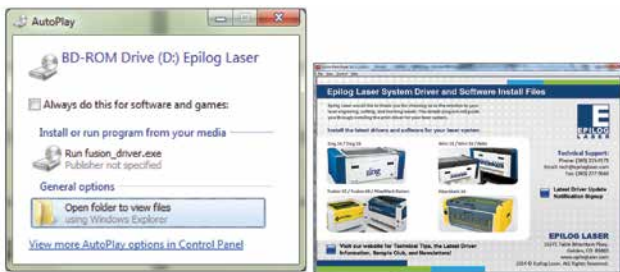


- You must now restart your computer** before you print to the laser.

Windows 8 and 10: USB Installation

Windows 8 will not automatically walk you through the installation process so it is important to follow the instructions below.

- Insert the Epilog driver install disc into your computer (or download the files from the website). One of the following screens will appear. For the USB installation, you will want to close them. We do not want the computer to automatically try to install the driver.

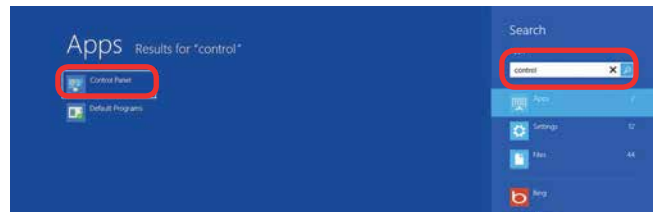


- With the power of your laser turned off, **connect the USB cable** to your computer and your laser.
- Power on your computer, **then** connect the USB cable to your computer and your laser.
- Power on your laser system. It will take about a minute for the laser to initialize.

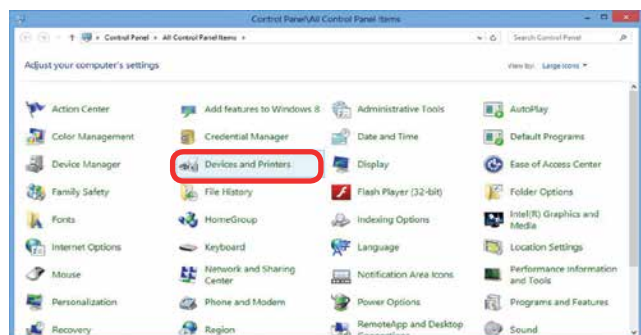
- Once your laser has initialized, there will not be any real indication on your Windows 8 computer that it is ready to install the Epilog driver, but it is ready.
- In Windows 8**, open the Charms Bar and click on the **Search** charm. To access the Charms Bar move your mouse into the lower right corner of your display.



- Type the word **Control** into the search bar. Click on the Control Panel box under Apps in the upper left of this window. **In Windows 10**, you can search for this from the desktop.



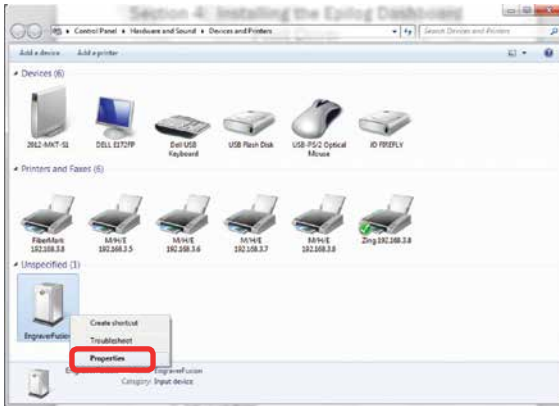
- Click **Devices and Printers**.



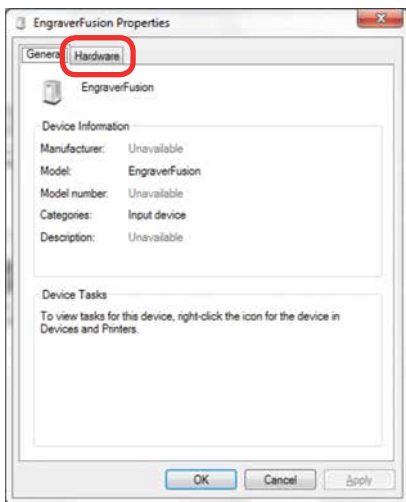
SECTION 3: DRIVER INSTALLATION

Windows 8 and 10: USB Installation

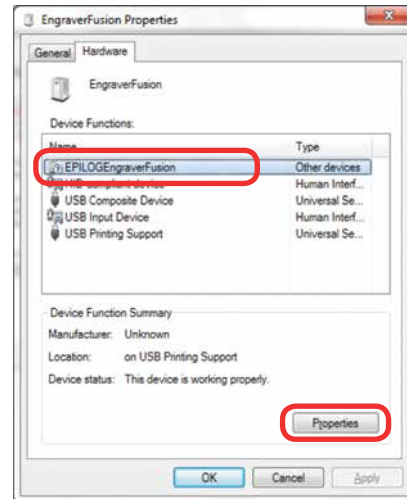
9. In the Unspecified section of Devices and Printers, **right click on the laser's icon**, then click **Properties**.



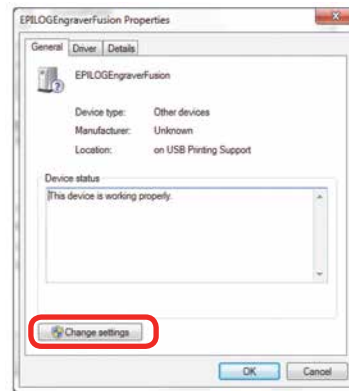
10. Select the **Hardware** tab.



11. Select the device **EPILOGEngraverFusion**. Then click **Properties**.



12. Click **Change Settings**.

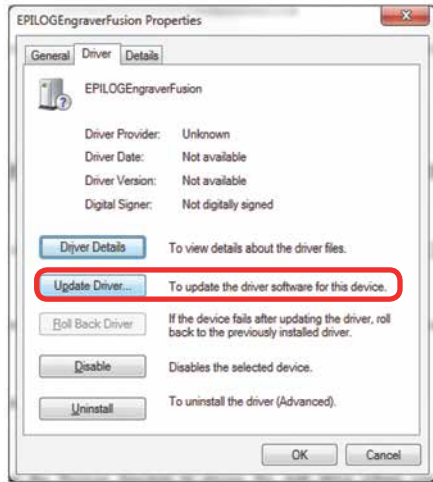


13. Click the **Driver** tab.

SECTION 3: DRIVER INSTALLATION

Windows 8 and 10: USB Installation

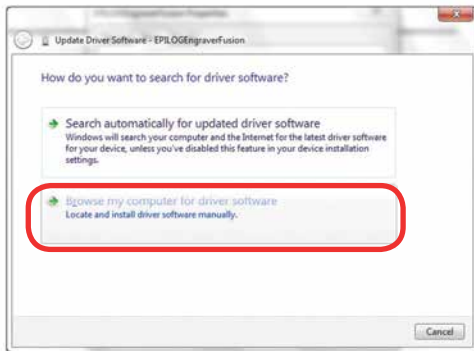
14. Click **Update Driver**.



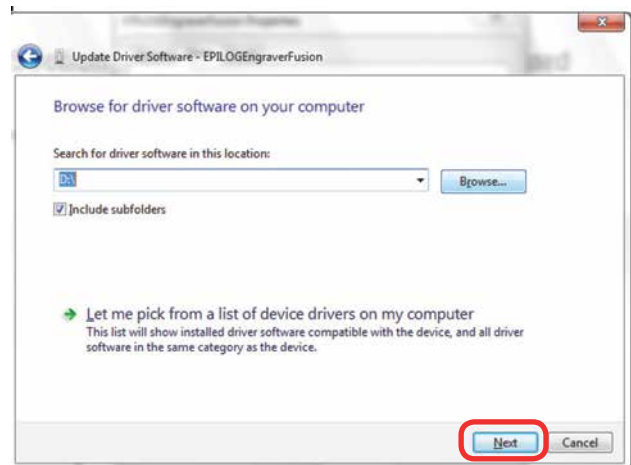
17. Find the disc drive with the Epilog install disc and click **OK**.



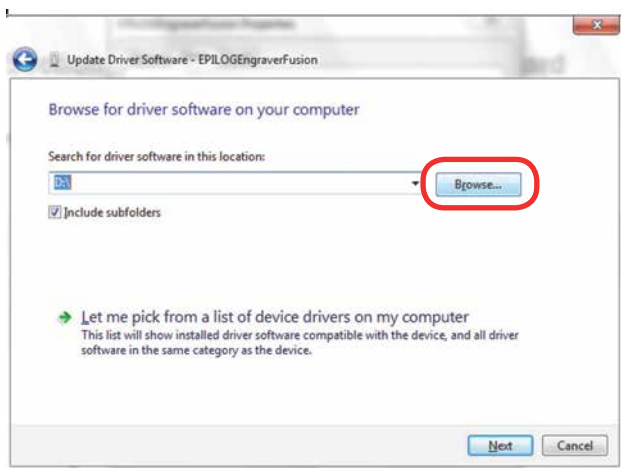
15. Click **Browse my Computer for driver software**.



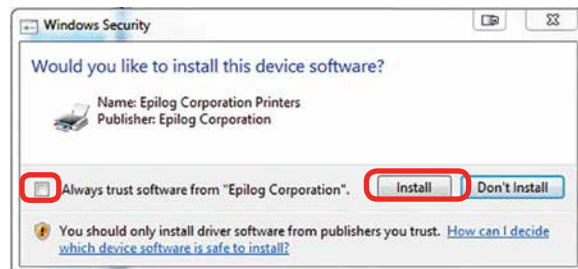
18. Once you have the proper disc drive showing click the **Next** button.



16. Use the **Browse** button to direct your computer to your disc drive that contains the Epilog driver disc that you inserted earlier in this process.

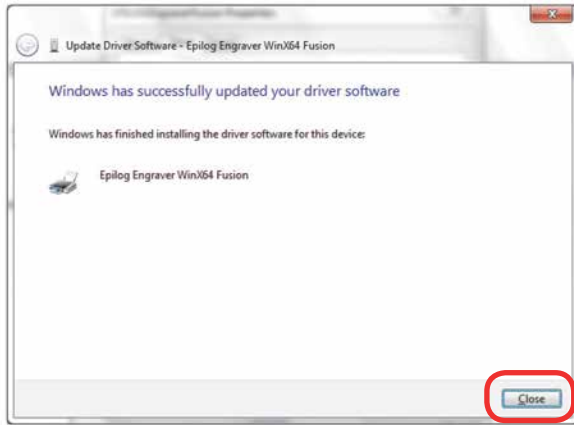


19. Wait while until the progress window disappears, then you may be asked if you want to install this driver. Click **Always trust software from "Epilog Corporation"** then **Install**.

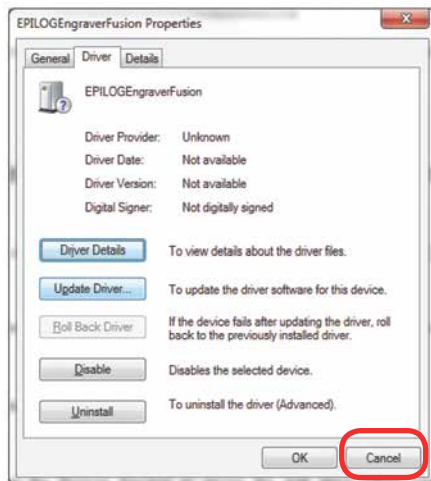


SECTION 3: DRIVER INSTALLATION

20. Your Epilog Laser Print Dashboard has been successfully installed on the USB port. Click **Close**.



21. In the next window, click **Cancel**.



22. You will see your driver in the Devices and Printers page. Click on the **red X** in the upper right corner of this window and you are ready to print!

